

Industrial Cameras

Dimensional Diagrams

Content

One4all Cameras

DxK 72AUC02.....	3
DxK 72BUC02.....	4

USB CMOS Cameras

DxK 21AUC03, DxK41AUC02, DxK61AUC02.....	5
DxK 21BUC03, DxK41BUC02, DxK61BUC02.....	6

USB CCD Cameras

DxK 21AU04, DxK 31AU03, DxK 41AU02.....	7
DxK 21BU04, DxK 31BU03, DxK 41BU02.....	8
DxK 21BU04.H, DxK 31BU03.H, DxK 41BU02.H.....	9

FireWire CCD Cameras

DxK 21AF04, DxK 31AF03, DxK 41AF02.....	10
DxK 21BF04, DxK 31BF03, DxK 41BF02.....	11
DxK 21BF04.H, DxK 31BF03.H, DxK 41BF02.H.....	12

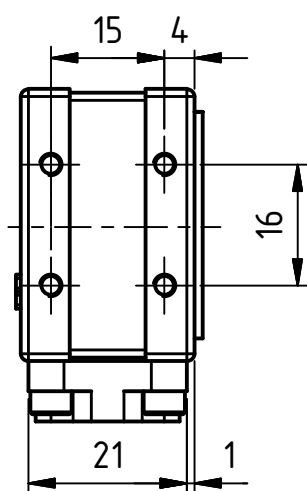
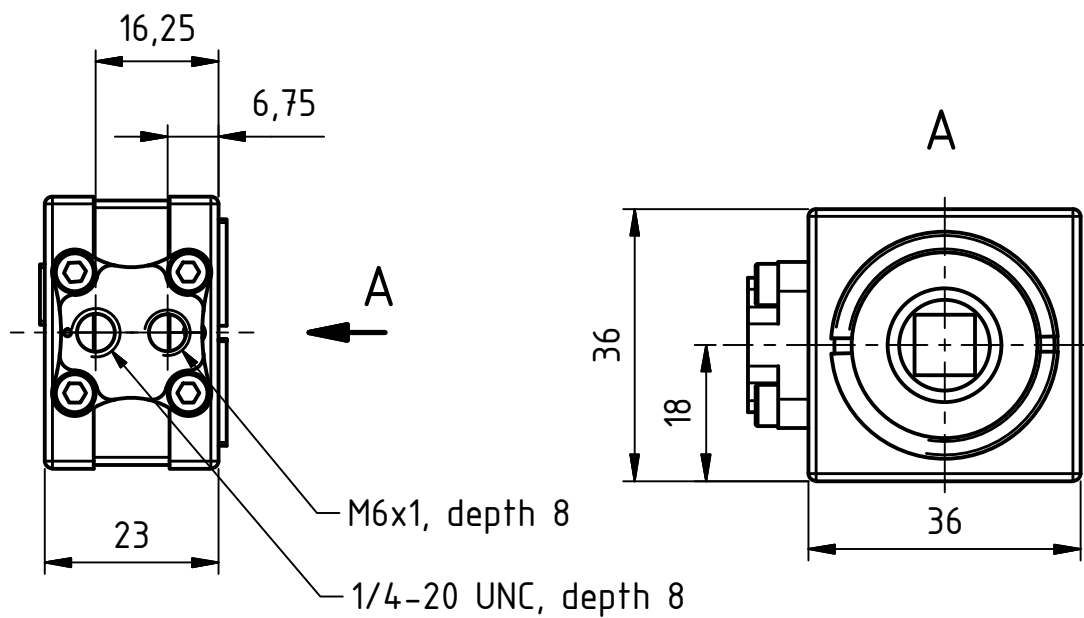
FireWire CCD Zoom Cameras

Dxx 21AF04-Z2, Dxx 31AF03-Z2.....	13
Dxx 21BF04-Z2, Dxx 31BF03-Z2.....	14
Dxx 21BF04-Z2.H, Dxx 31BF03-Z2.H.....	15

GigE CCD Cameras

DxK 21AG04, DxK 31AG03, DxK 41AG02.....	16
DxK 21AG03.I, DxK 31AG03.I, DxK 41AG02.I.....	17
DxK 21BG04.H, DxK 31BG03.H, DxK 41BG02.H.....	18

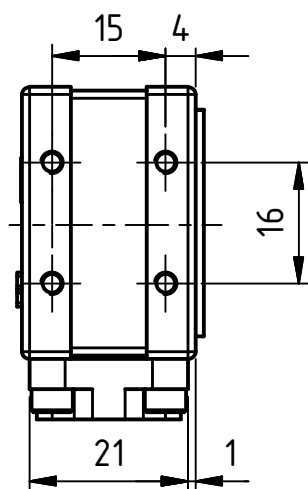
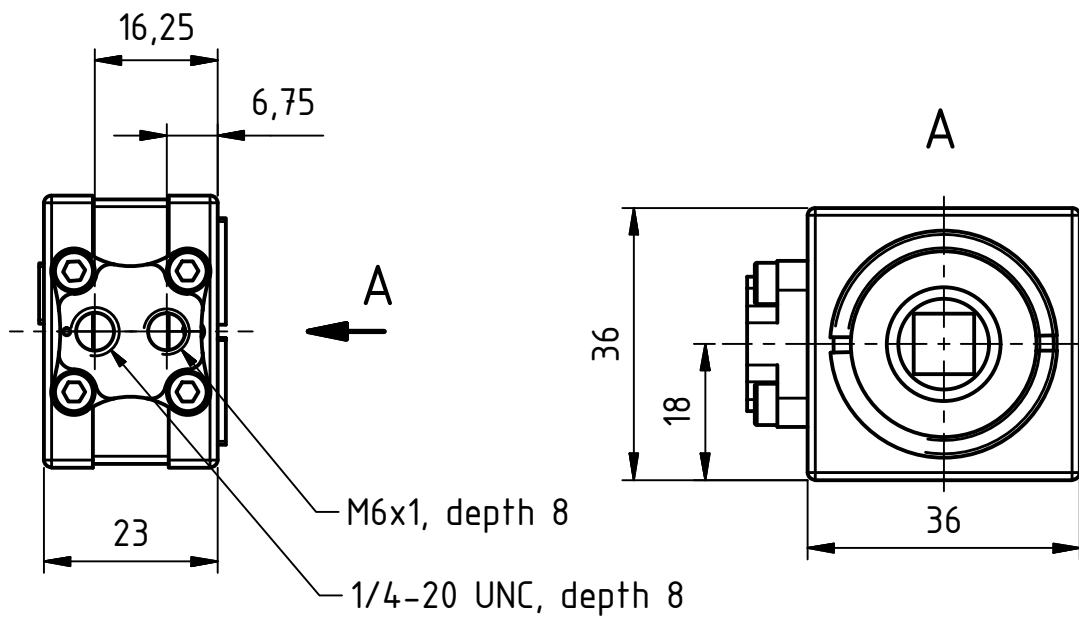
DxK 72AUC02



Dimensions: mm
Tolerances: DIN ISO 2768m



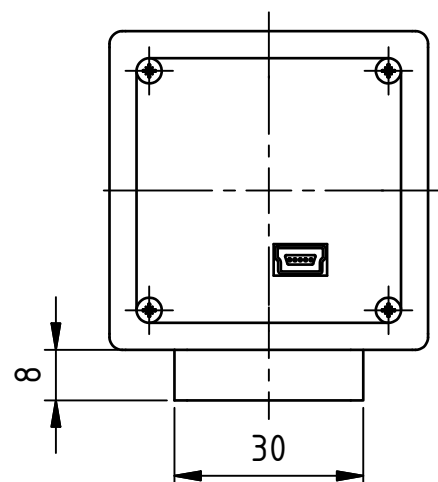
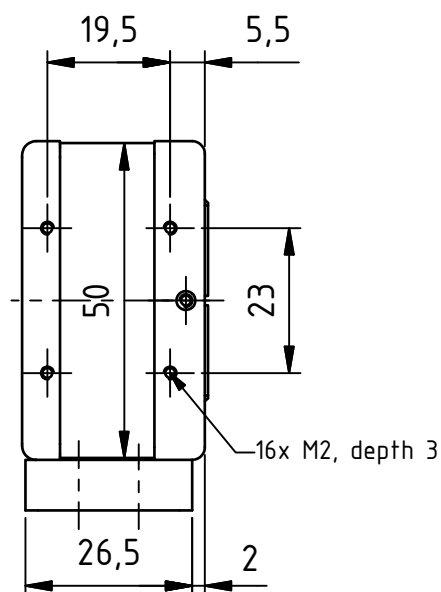
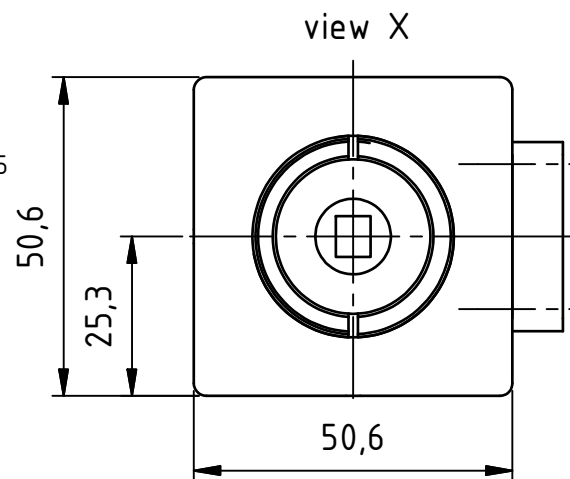
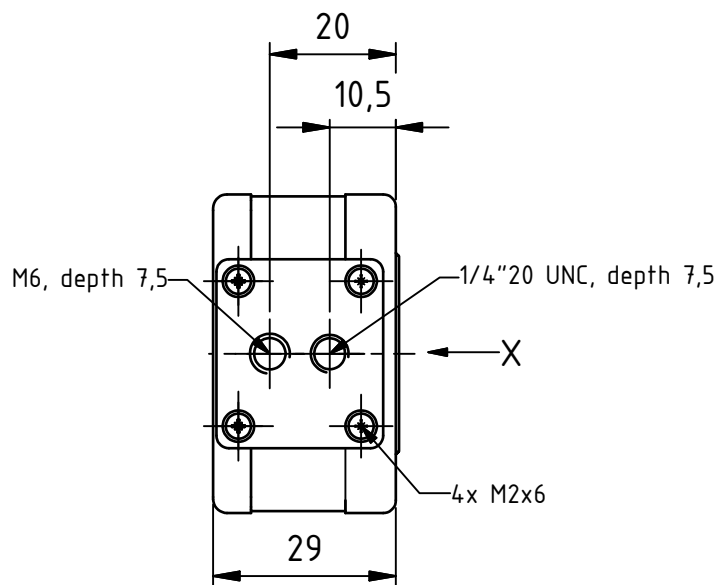
DxK 72BUC02



Dimensions: mm
Tolerances: DIN ISO 2768m



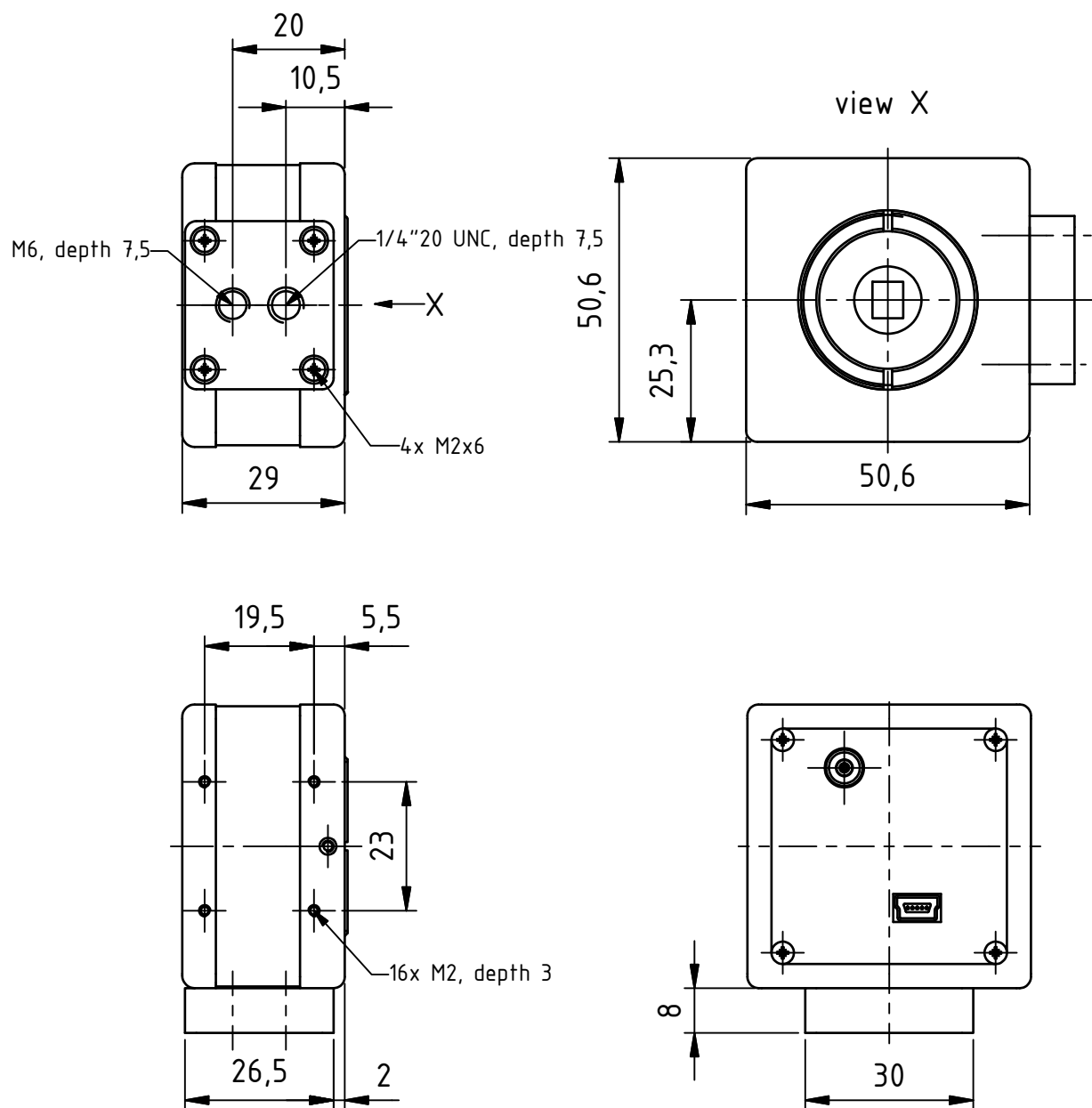
DxK 21AUC03, DxK41AUC02, DxK61AUC02



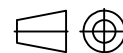
Dimensions: mm
Tolerances: DIN ISO 2768m



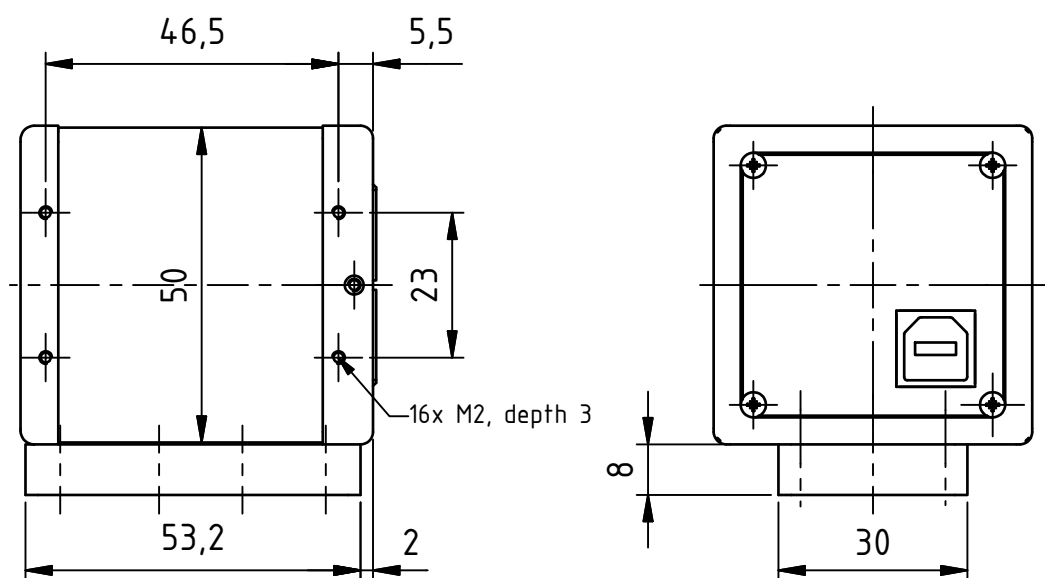
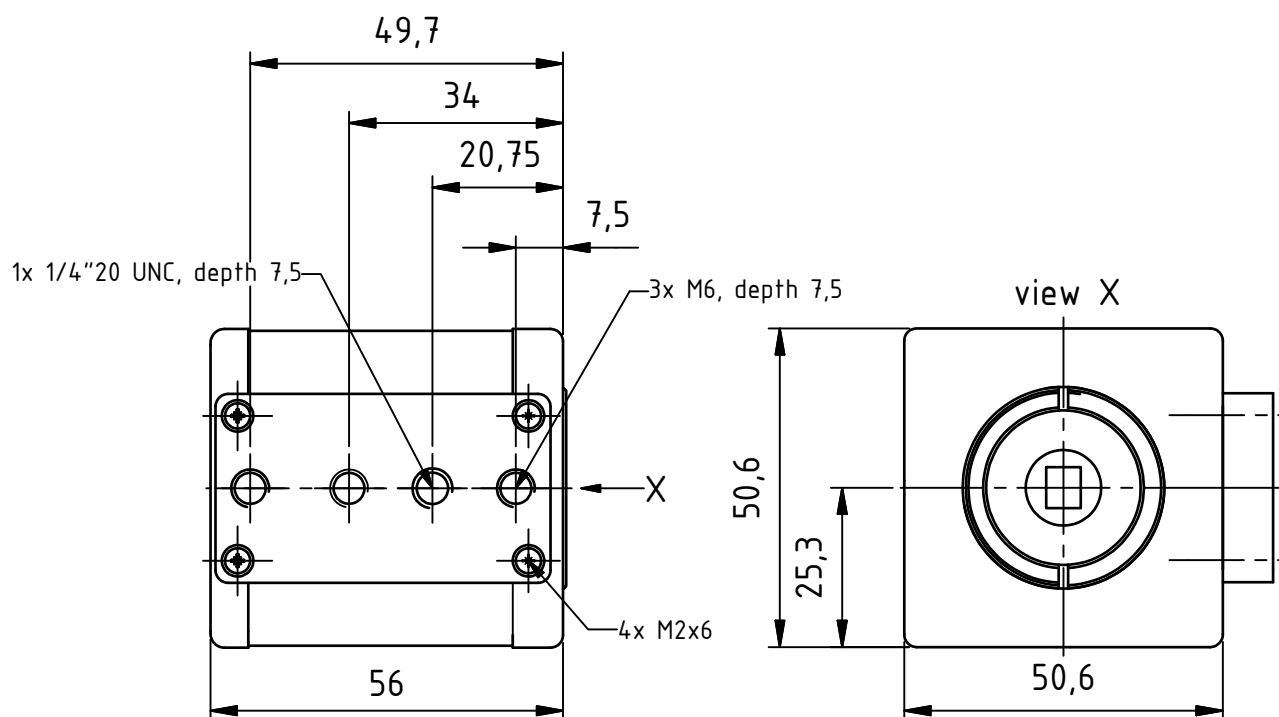
DxK 21BUC03, DxK41BUC02, DxK61BUC02



Dimensions: mm
Tolerances: DIN ISO 2768m



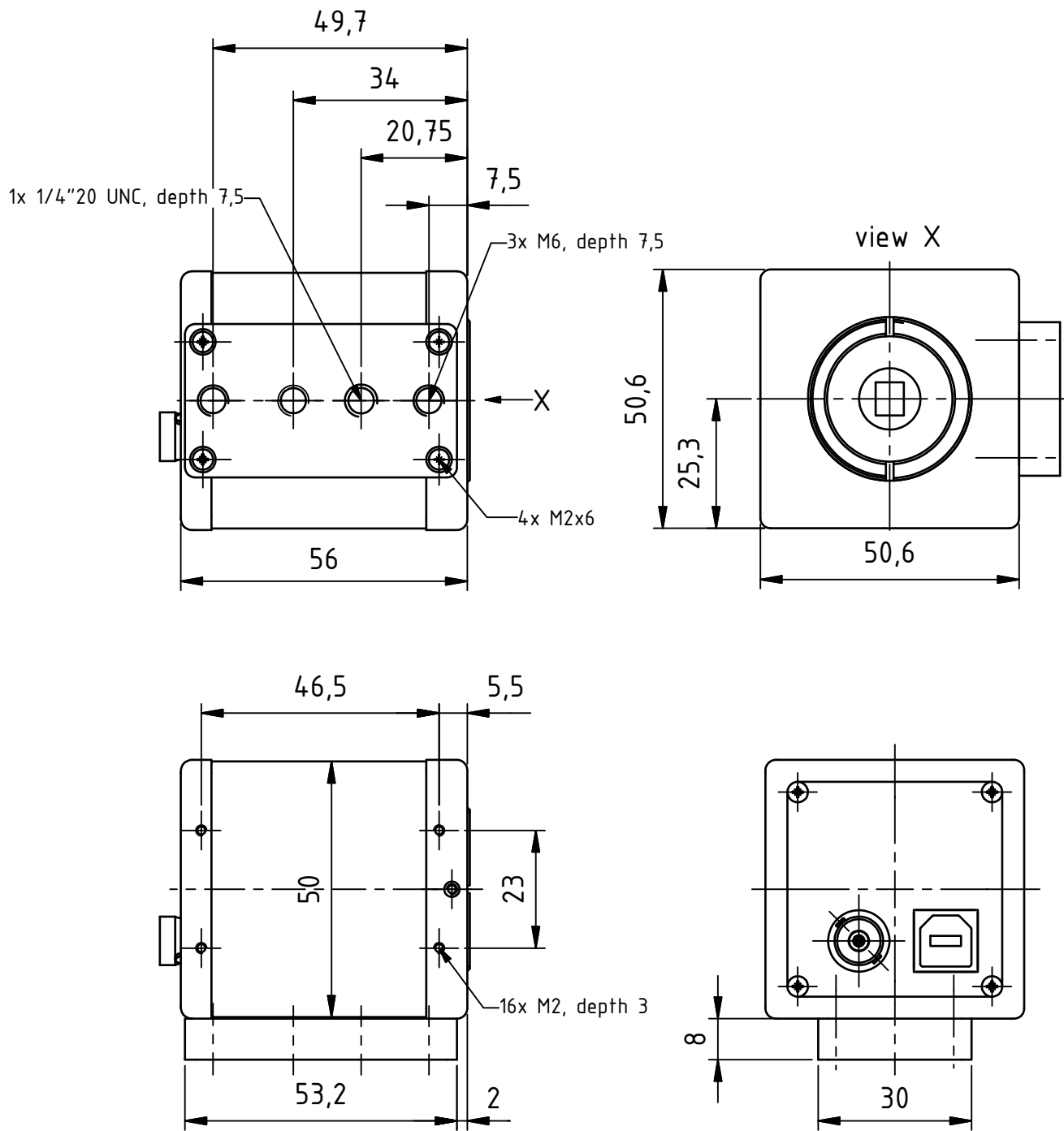
DxK 21AU04, DxK 31AU03, DxK 41AU02



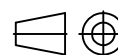
Dimensions: mm
Tolerances: DIN ISO 2768m



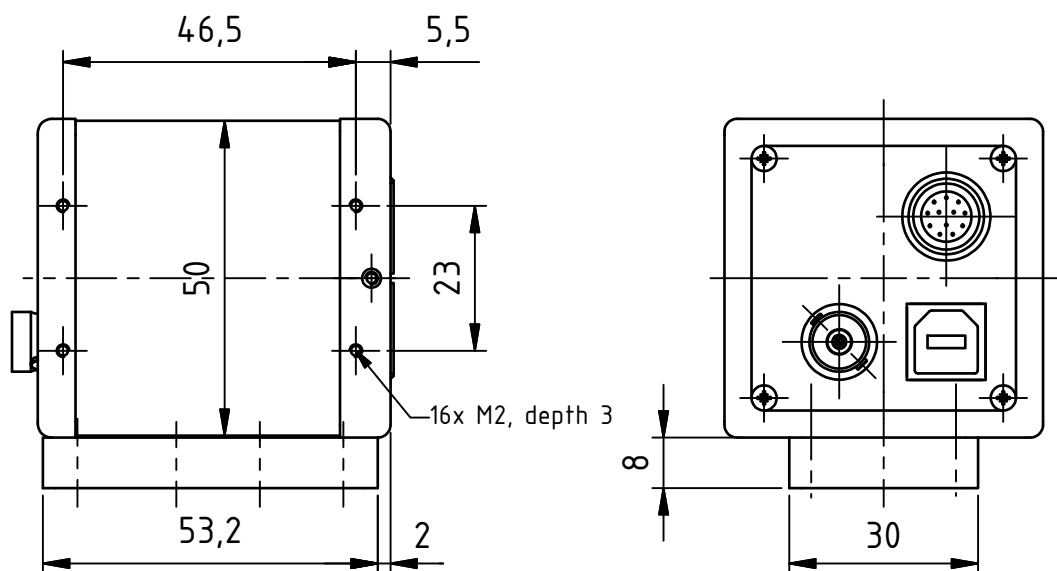
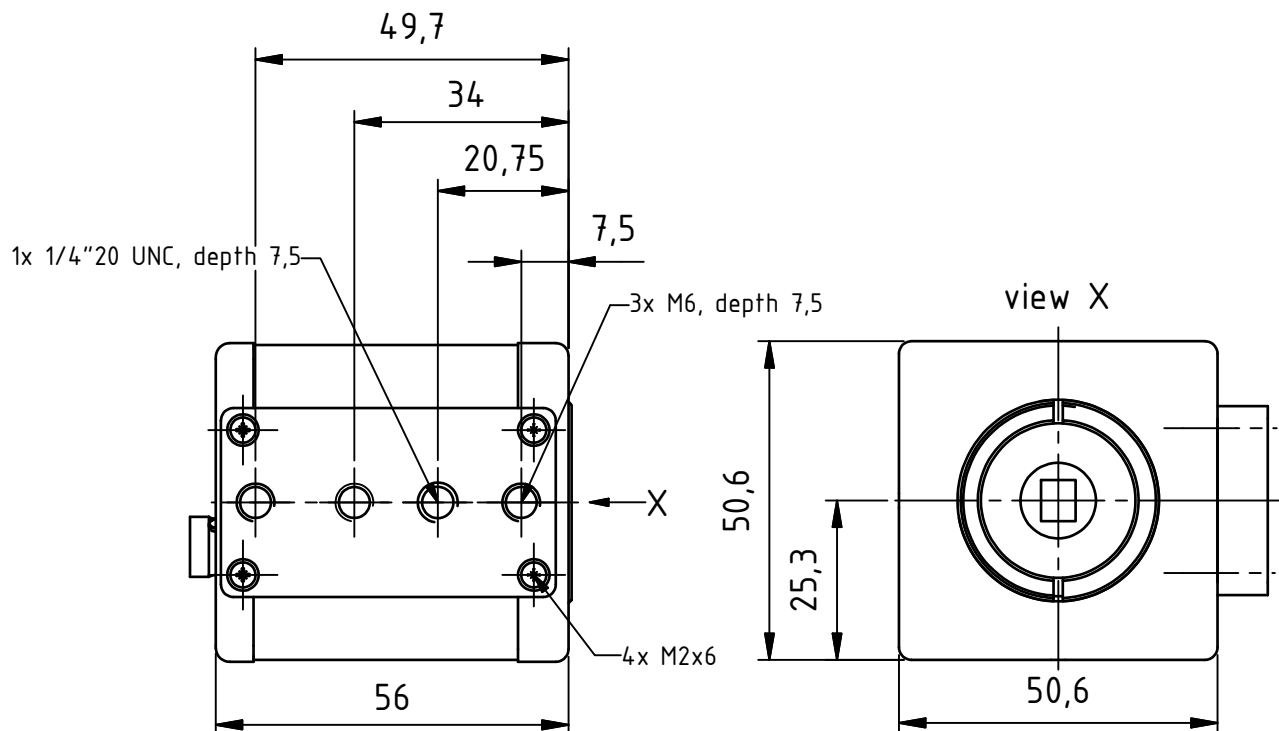
DxK 21BU04, DxK 31BU03, DxK 41BU02



Dimensions: mm
Tolerances: DIN ISO 2768m



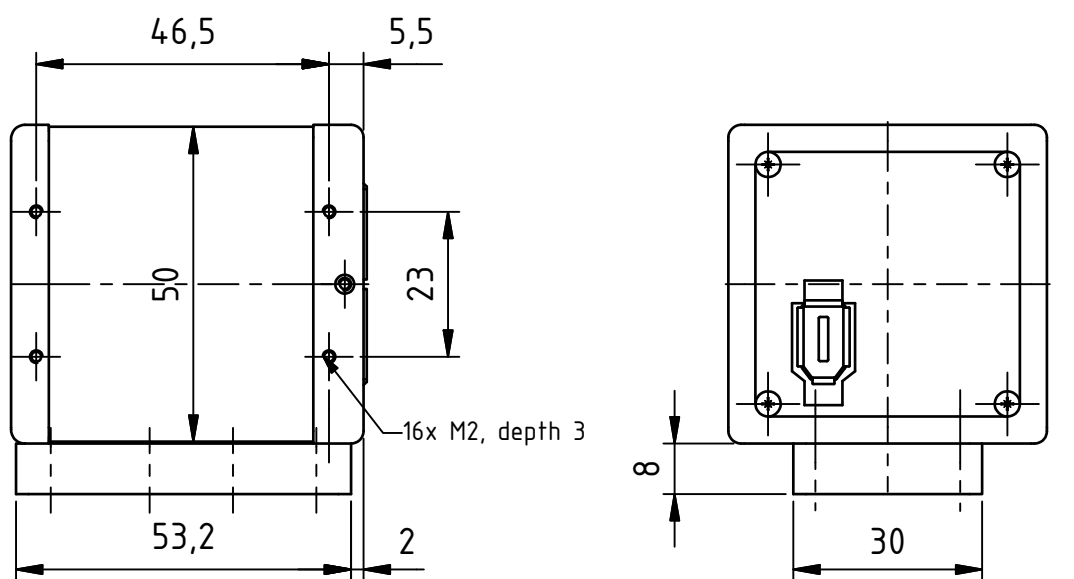
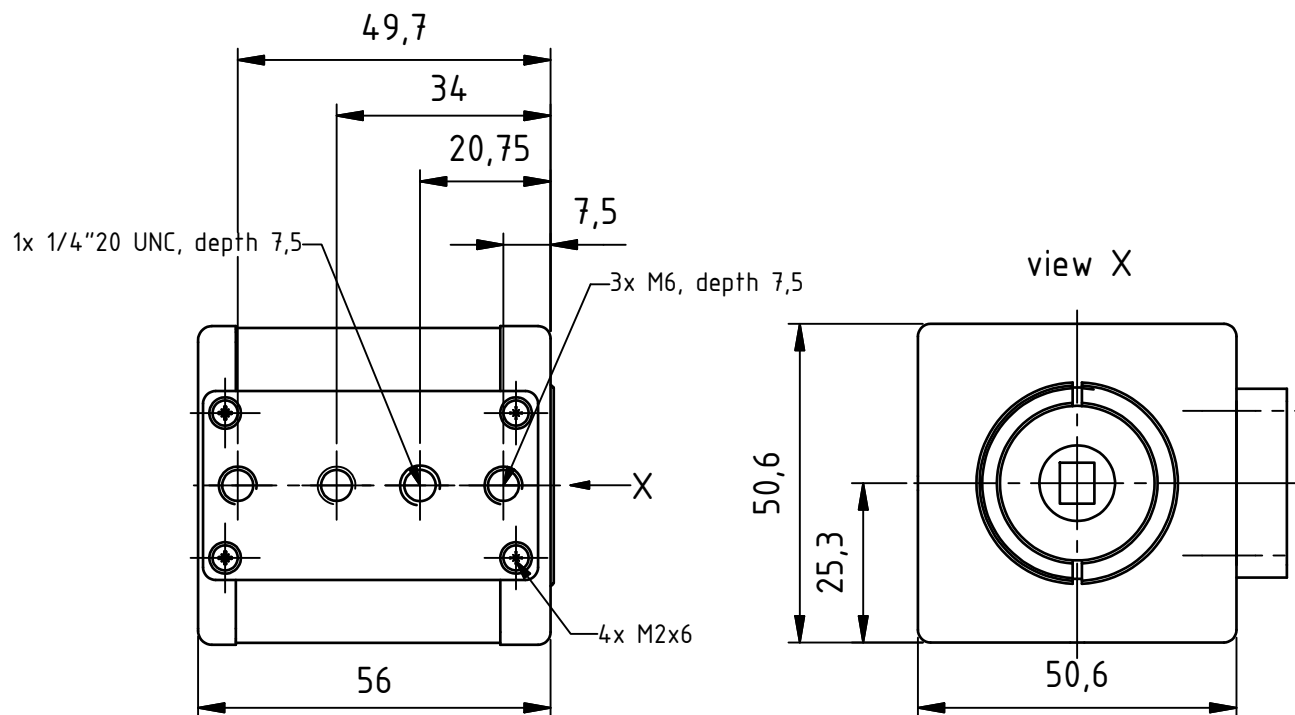
DxK 21BU04.H, DxK 31BU03.H, DxK 41BU02.H



Dimensions: mm
Tolerances: DIN ISO 2768m



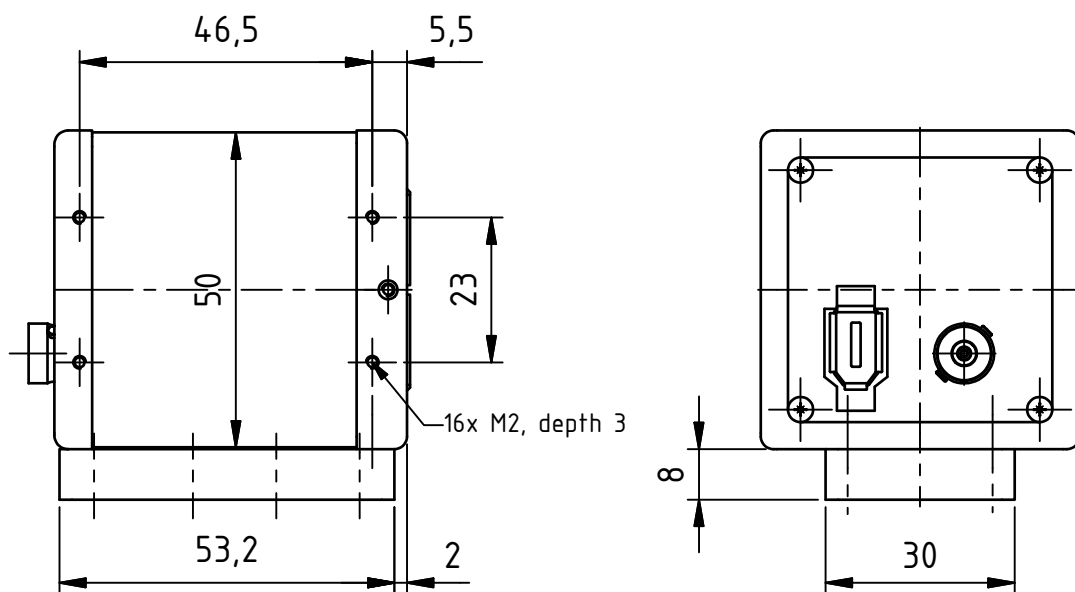
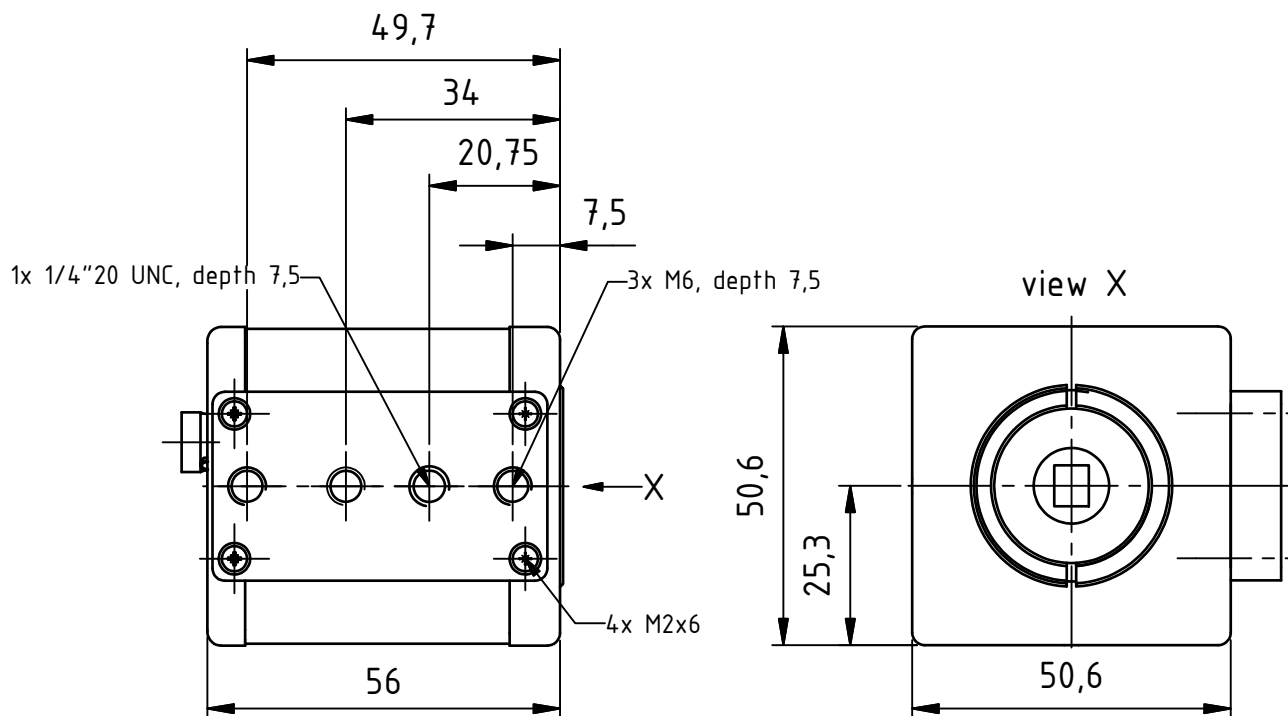
DxK 21AF04, DxK 31AF03, DxK 41AF02



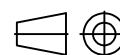
Dimensions: mm
Tolerances: DIN ISO 2768m



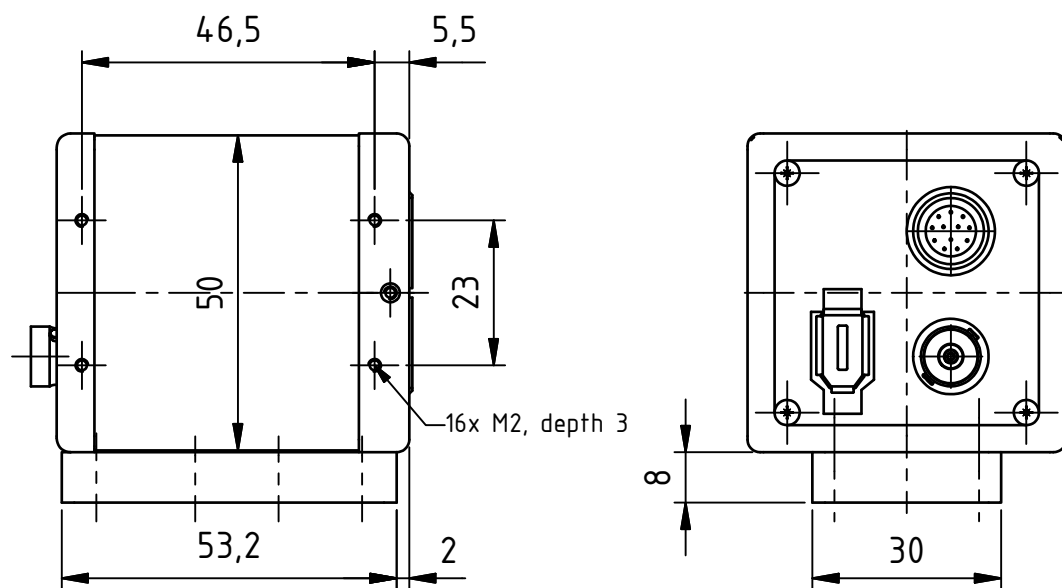
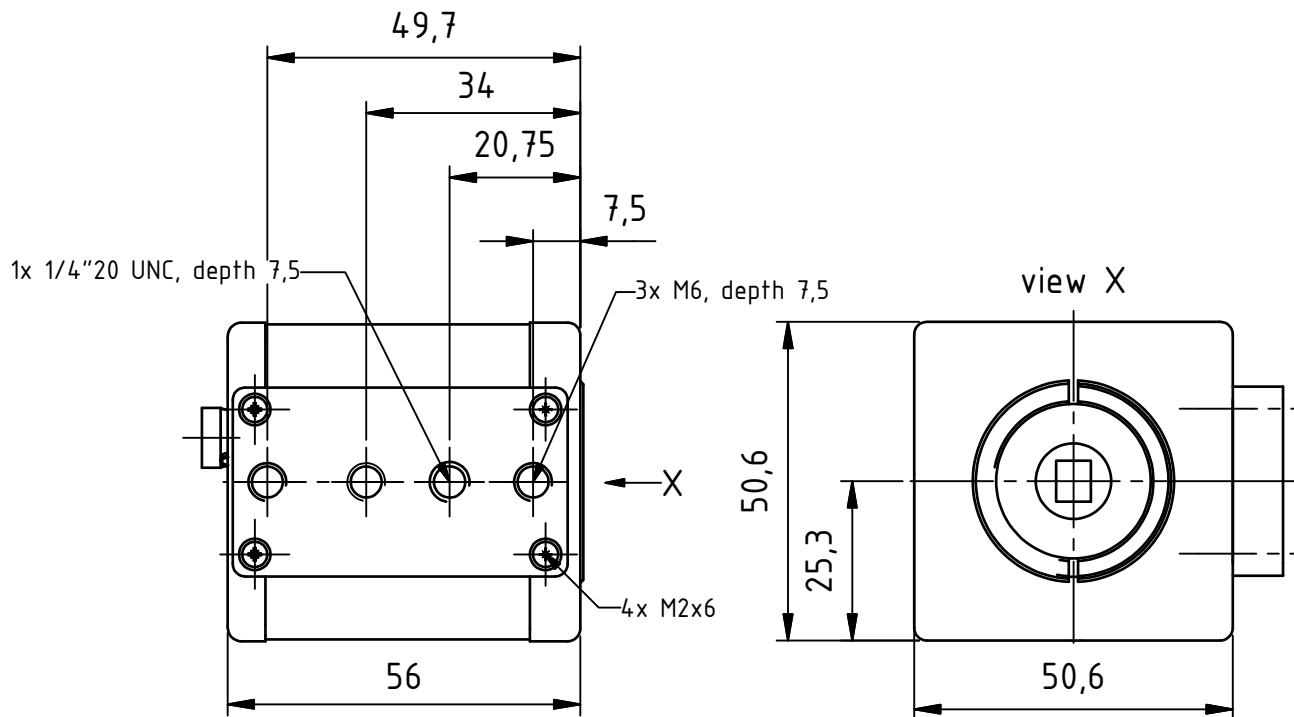
DxK 21BF04, DxK 31BF03, DxK 41BF02



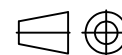
Dimensions: mm
Tolerances: DIN ISO 2768m



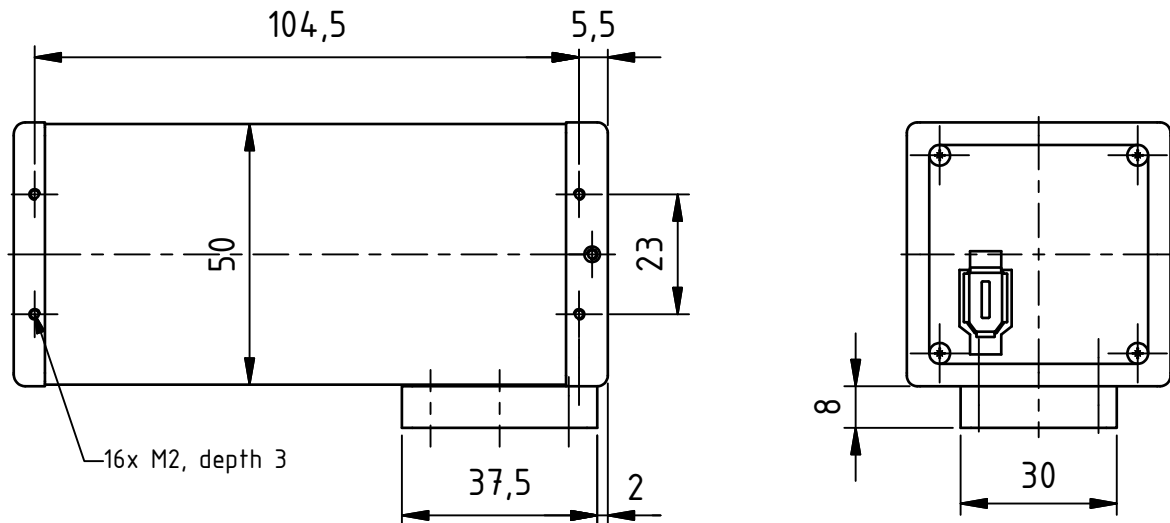
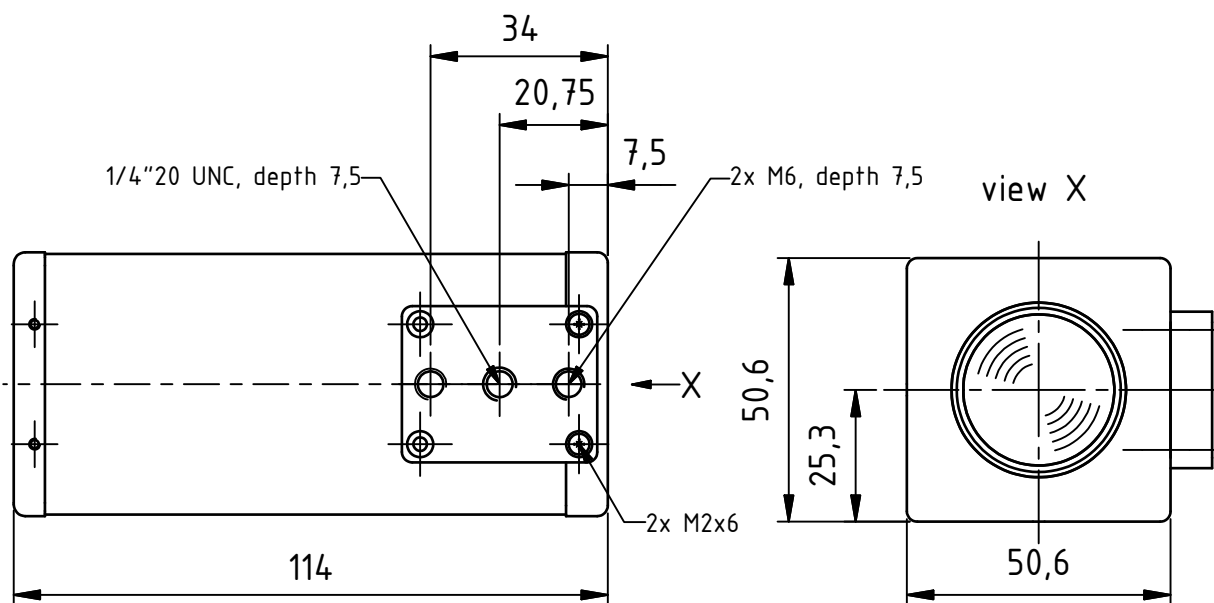
DxK 21BF04.H, DxK 31BF03.H, DxK 41BF02.H



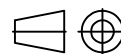
Dimensions: mm
Tolerances: DIN ISO 2768m



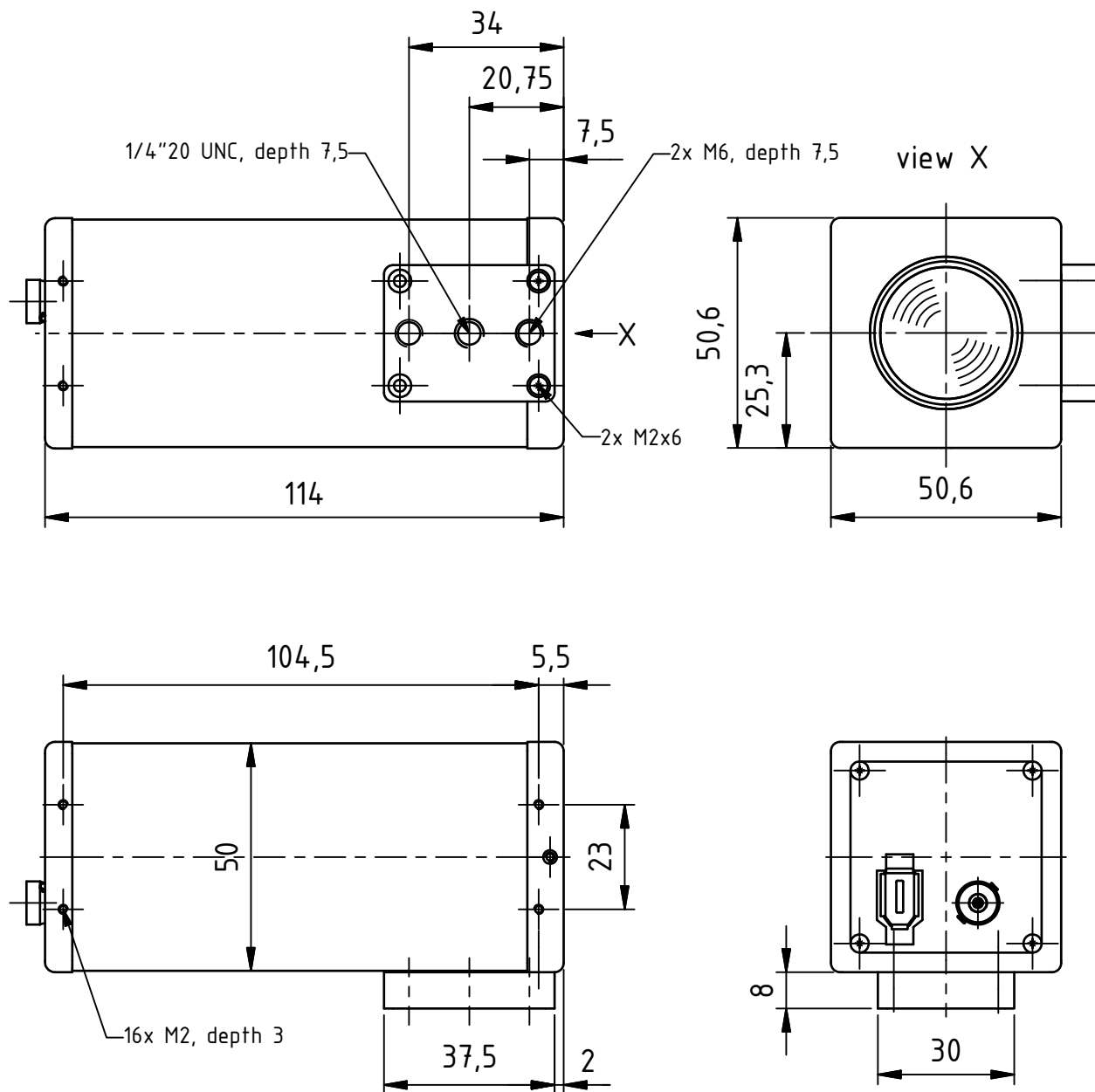
Dxx 21AF04-Z2, Dxx 31AF03-Z2



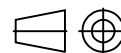
Dimensions: mm
Tolerances: DIN ISO 2768m



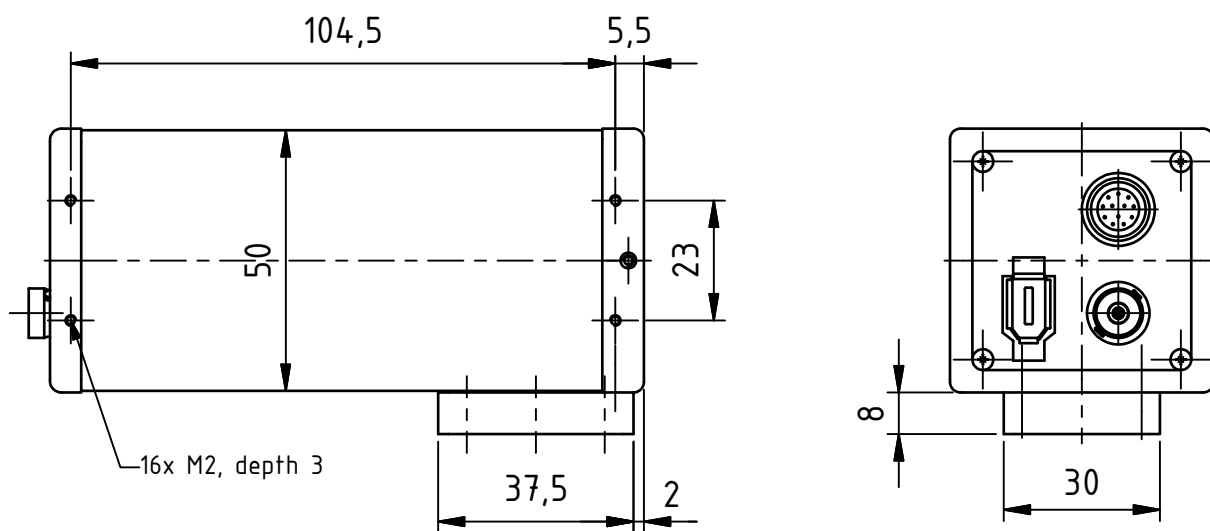
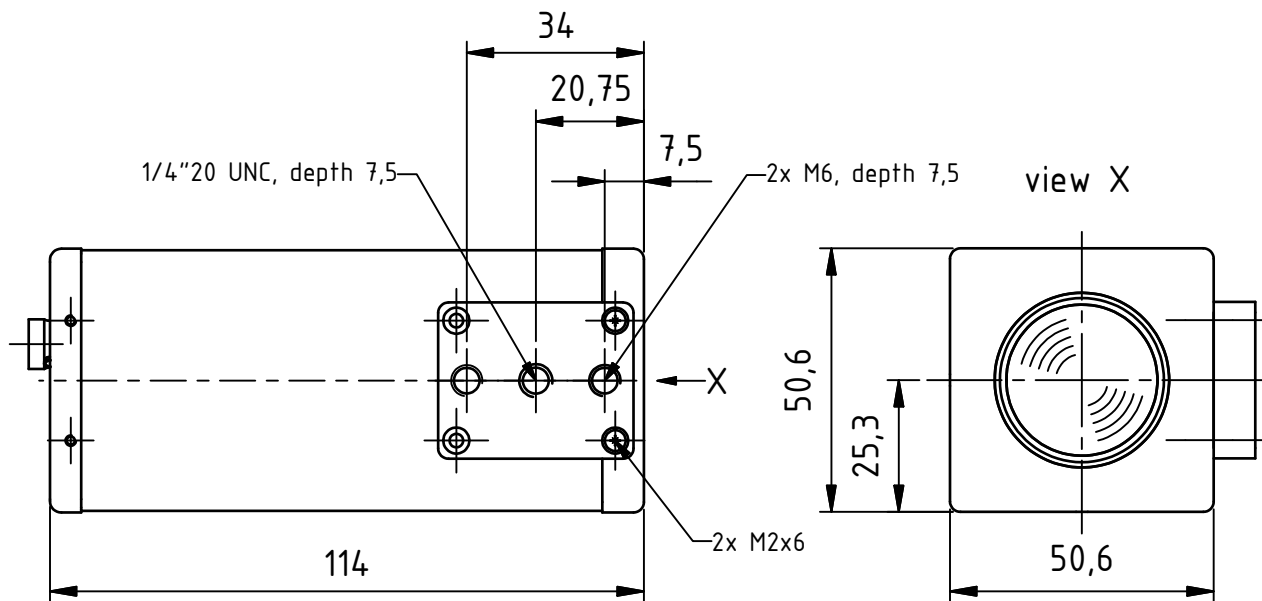
Dxx 21BF04-Z2, Dxx 31BF03-Z2



Dimensions: mm
Tolerances: DIN ISO 2768m



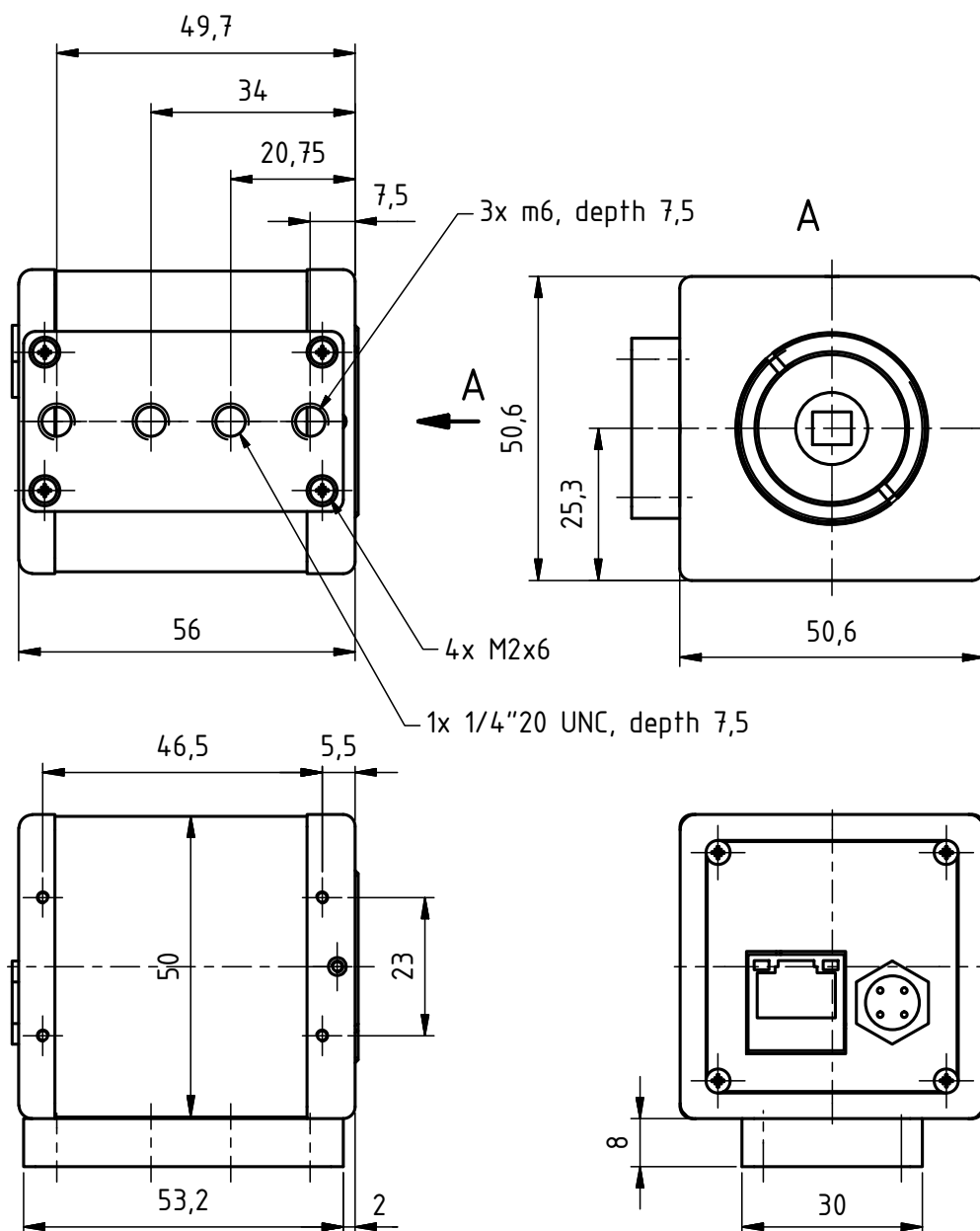
Dxx 21BF04.H-Z2, Dxx 31BF03.H-Z2



Dimensions: mm
Tolerances: DIN ISO 2768m



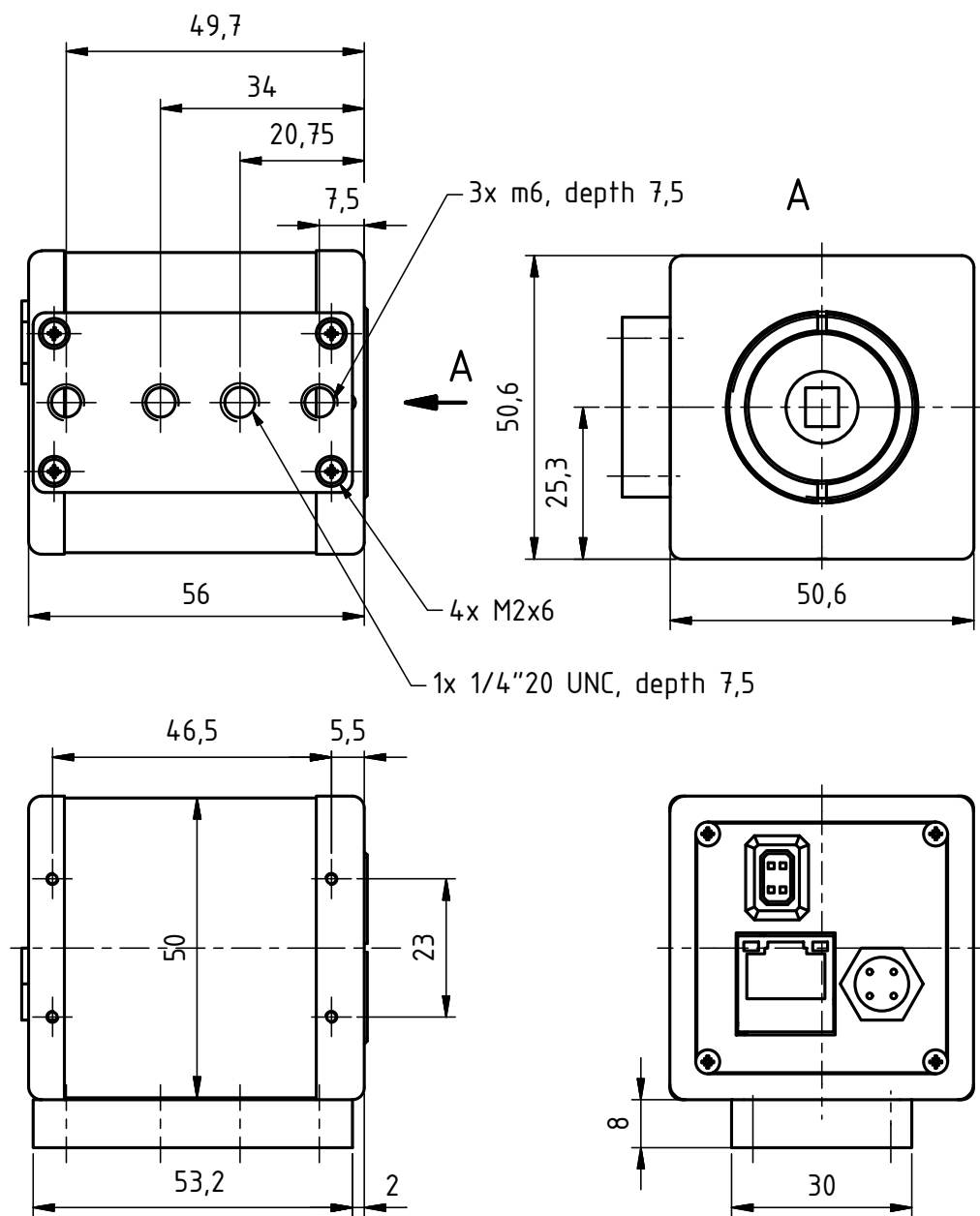
DxK 21AG04, DxK 31AG03, DxK 41AG02



Dimensions: mm
Tolerances: DIN ISO 2768m



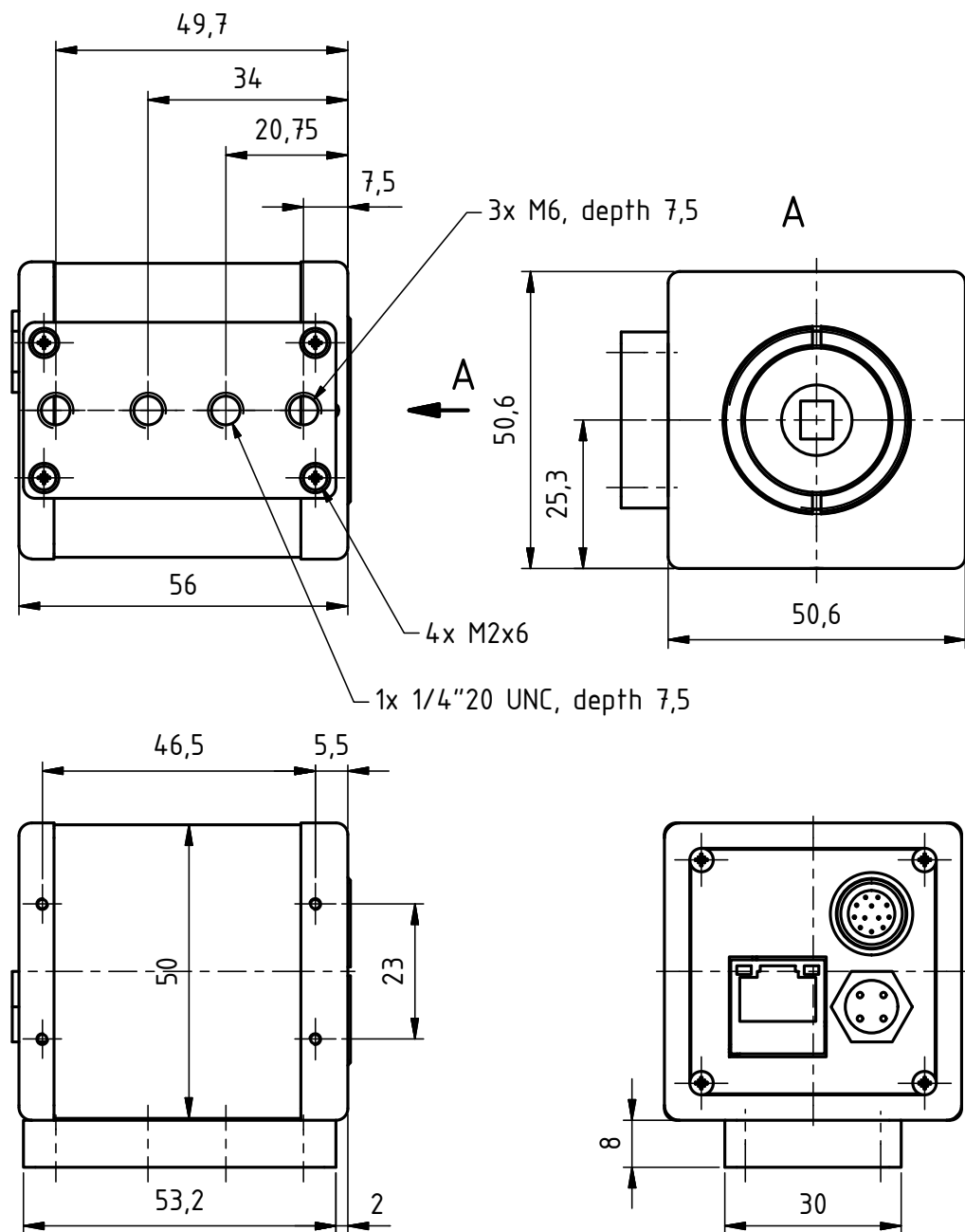
DxK 21AG04.I, DxK 31AG03.I, DxK 41AG02.I



Dimensions: mm
Tolerances: DIN ISO 2768m



DxK 21BG04.H, DxK 31BG03.H, DxK 41BG02.H



Dimensions: mm
Tolerances: DIN ISO 2768m





Headquarters: The Imaging Source Europe GmbH
Sommerstrasse 36, D-28215 Bremen, Germany
Phone: +49 421 33591-0

North & South America: The Imaging Source, LLC
6926 Shannon Willow Rd, S 400, Charlotte, NC 28226, USA
Phone: +1 704-370-0110

Asia Pacific: The Imaging Source Taiwan Co. Ltd.
6F-1, No.230, Sec.3, Ba-De Road,, Taipei City 10555, Taiwan
Phone: +886 2-2577-1228
www.theimagingsource.com

All product and company names in this document may be trademarks and tradenames of their respective owners and are hereby acknowledged.

The Imaging Source Europe GmbH cannot and does not take any responsibility or liability for any information contained in this document. The source code presented in this document is exclusively used for didactic purposes. The Imaging Source does not assume any kind of warranty expressed or implied, resulting from the use of the content of this document or the source code.

The Imaging Source Company reserves the right to make changes in specifications, function or design at any time and without prior notice.

Last update: May 2010

Copyright © 2008 The Imaging Source Europe GmbH

All rights reserved. Reprint, also in parts, only allowed with permission of The Imaging Source Europe GmbH.

All weights and dimensions are approximate. Unless otherwise specified the lenses shown in the context of cameras are not shipped with these cameras.