

# Manta

## G-201-30fps



- 30 fps @ 2 Megapixel
- PoE optional
- Angled head and boardlevel variants
- Video-iris lens control

## Description

GigE Vision camera, 2 Megapixels and 30 fps, Sony ICX274, PoE option

Manta G-201B/C-30fps is a fast GigE Vision camera with a Sony ICX274 sensor. It runs at 30 fps (full resolution). With a smaller ROI, higher frame rates are possible. It incorporates three LUTs, sophisticated color correction algorithms, a robust metal housing, and many modular options.

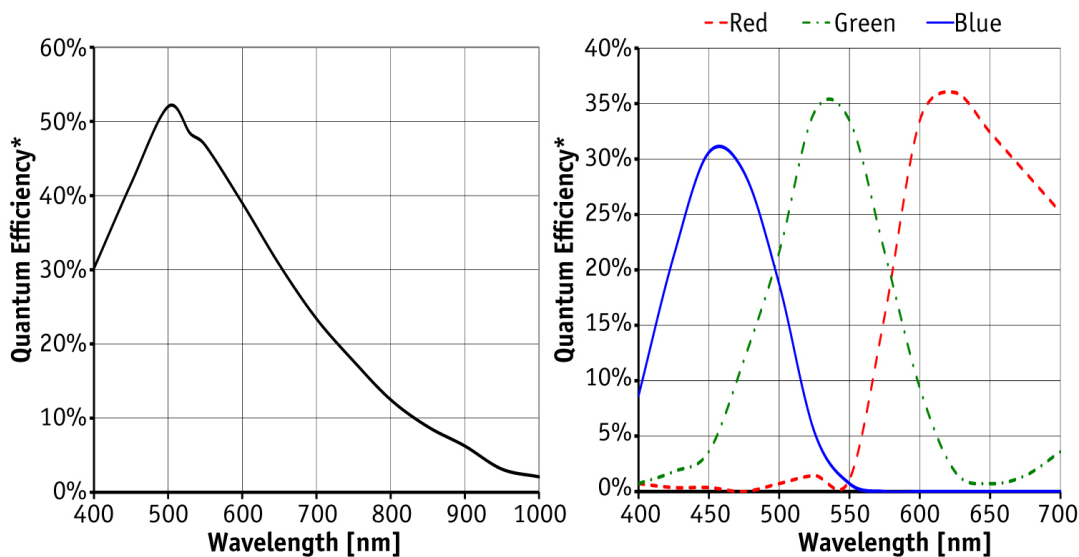
Options

- PoE (Power over Ethernet)
- Various IR cut/pass filters and lens mounts
- Angled head, board level version, white medical housing

## Specifications

Manta	G-201-30fps
Interface	IEEE 802.3 1000BASE-T, IEEE 802.3af (PoE) optional
Resolution	1624 × 1234
Sensor	Sony ICX274
Sensor type	CCD Progressive
Sensor size	Type 1/1.8
Cell size	4.4 μm
Lens mount	C/CS-Mount
Max frame rate at full resolution	30 fps
ADC	12 bit
On-board FIFO	32 Mbyte
	<b>Output</b>
Bit depth	8-12 bit

Manta	G-201-30fps
Mono modes	Mono8, Mono12, Mono12Packed
Color modes YUV	YUV411Packed, YUV422Packed, YUV444Packed
Color modes RGB	RGB8Packed, BGR8Packed
Raw modes	BayerRG8, BayerRG12Packed, BayerRG12
General purpose inputs/outputs (GPIOs)	
Opto-isolated I/Os	2 inputs, 2 outputs
RS-232	1
Operating conditions/dimensions	
Operating temperature	+5 °C ... +45 °C
Power requirements (DC)	PoE, or 8-30 VDC
Power consumption (@12 V)	5.4 W (PoE) / 4.6 W (non-PoE)
Mass	210 g (PoE) / 200 g (non-PoE)
Body dimensions (L × W × H in mm)	86.4 × 44 × 29 mm incl. connectors
Regulations	CE, FCC Class B, RoHS



\*QE measured without protection glass or filters. With glass or filters, quantum efficiency decreases by approximately 10%.

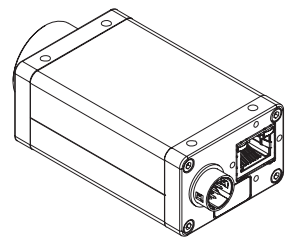
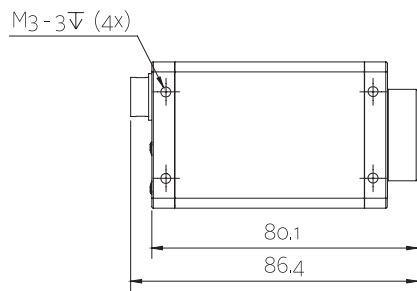
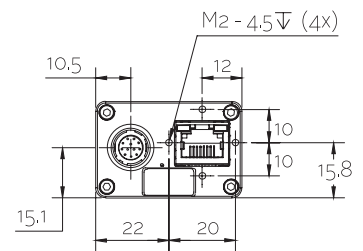
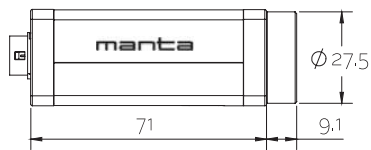
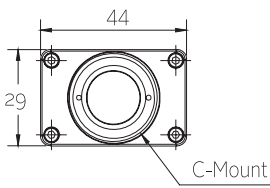
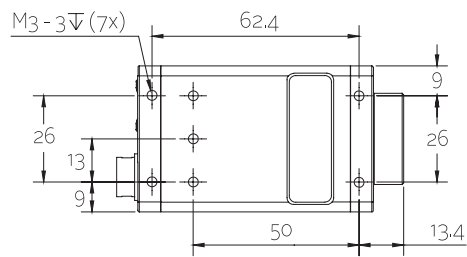
## Features

- Video-type auto iris
- ROI, separate ROI for auto features
- Binning
- Decimation
- Auto gain (manual gain control: 0 to 31 dB)
- Auto exposure (10  $\mu$ s to 60 s)



- Auto white balance
- LUTs (look-up tables)
- Gamma
- Hue, saturation, color correction
- StreamBytesPerSecond (easy bandwidth control)
- Stream hold
- Sync out modes: Trigger ready, input, exposing, readout, imaging, strobe, GPO
- Event channel
- Chunk data
- Storable user sets

## Technical drawing





## Applications

Manta G-201B/C-30fps is a fast GigE Vision camera with PoE option. Thanks to its flexibility (angled head, board level version with separate sensor head), it can be used for a variety of applications. The Manta incorporates three LUTs (separate R, G, and B control), color correction, and many more features.

Typical applications:

- Machine vision
- ITS (Intelligent Traffic Solutions)
- Entertainment and multimedia applications
- 3D applications
- ITS (Intelligent traffic solutions)
- ... and many more