

# Manta

## G-046



- 67 fps @ 0.5 Megapixel
- PoE optional
- Angled head and boardlevel variants
- Video-iris lens control

## Description

GigE Vision camera, XGA, Sony ICX415 - PoE option

Manta G-046B/C is a very affordable GigE Vision camera with XGA resolution and a Sony ICX415 sensor. It runs at 67 fps (full resolution). With a smaller ROI, faster frame rates are possible.

This camera incorporates three LUTs, sophisticated color correction algorithms, a robust metal housing, and many modular options.

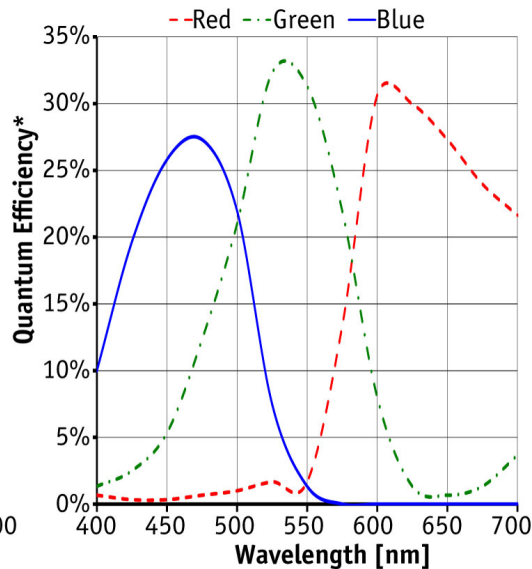
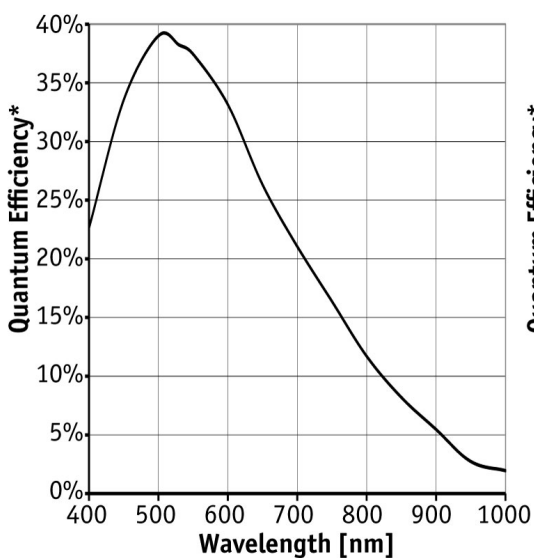
Options

- PoE (Power over Ethernet)
- Various IR cut/pass filters and lens mounts
- Angled head, board level version, white medical housing

## Specifications

Manta	G-046
Interface	IEEE 802.3 1000BASE-T, IEEE 802.3af (PoE) optional
Resolution	780 × 580
Sensor	Sony ICX415
Sensor type	CCD Progressive
Sensor size	Type 1/2
Cell size	8.3 μm
Lens mount	C/CS-Mount
Max frame rate at full resolution	67 fps
ADC	12 bit
On-board FIFO	32 Mbyte
	<b>Output</b>
Bit depth	8-12 bit

Manta	G-046
Mono modes	Mono8, Mono12, Mono12Packed
Color modes YUV	YUV411Packed, YUV422Packed, YUV444Packed
Color modes RGB	RGB8Packed, BGR8Packed, RGBA8Packed, BGRA8Packed
Raw modes	BayerRG8, BayerRG12Packed, BayerRG12
<b>General purpose inputs/outputs (GPIOs)</b>	
Opto-isolated I/Os	2 inputs, 2 outputs
RS-232	1
<b>Operating conditions/dimensions</b>	
Operating temperature	+5 °C ... +45 °C
Power requirements (DC)	PoE, or 8-30 VDC
Power consumption (@12 V)	4.2 W (PoE) / 3.6 W (non-PoE)
Mass	210 g (PoE) / 200 g (non-PoE)
Body dimensions (L × W × H in mm)	86.4 × 44 × 29 mm incl. connectors
Regulations	CE, FCC Class B, RoHS



\*QE measured without protection glass or filters. With glass or filters, quantum efficiency decreases by approximately 10%.

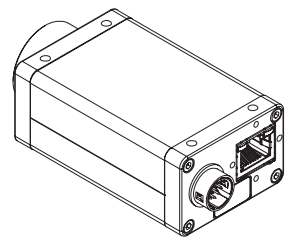
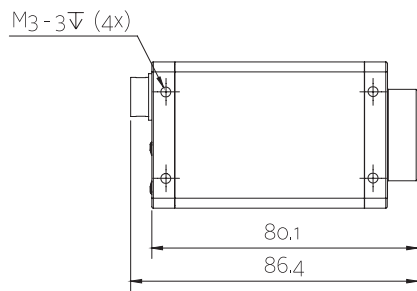
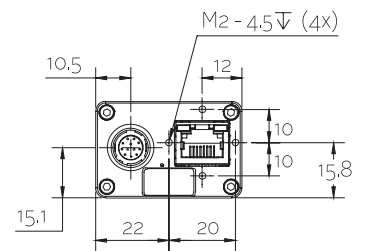
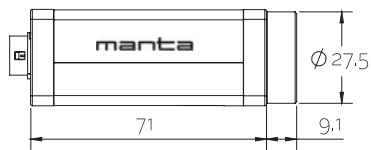
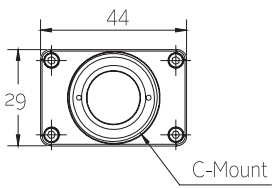
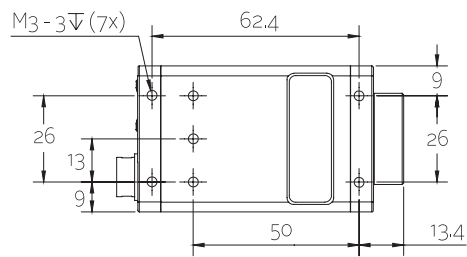
## Features

- Video-type auto iris
- ROI, separate ROI for auto features
- Binning
- Decimation
- Auto gain (manual gain control: 0 to 31 dB)



- Auto exposure (26  $\mu$ s to 60 s)
- Auto white balance
- LUTs (look-up tables)
- Gamma
- Hue, saturation, color correction
- StreamBytesPerSecond (easy bandwidth control)
- Stream hold
- Sync out modes: Trigger ready, input, exposing, readout, imaging, strobe, GPO
- Event channel
- Chunk data
- Storable user sets

## Technical drawing





## Applications

Manta G-046B/C is a sensitive, flexible GigE Vision camera with many useful options: PoE (Power over Ethernet), angled head, boardlevel versions and more.

Typical applications:

- Applications which require high sensitivity (low light)
- Semiconductor inspection
- Pharmaceutical inspection
- Logistics
- ITS/Traffic monitoring
- ... and more